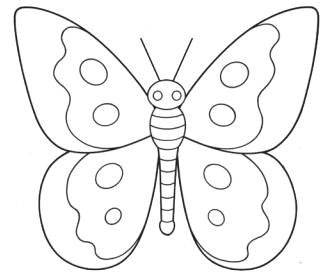
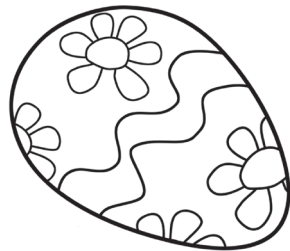
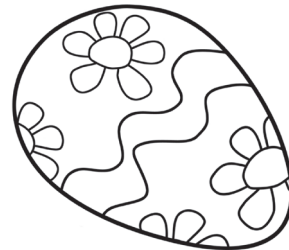
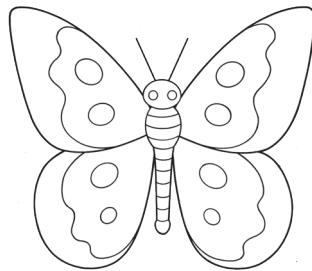
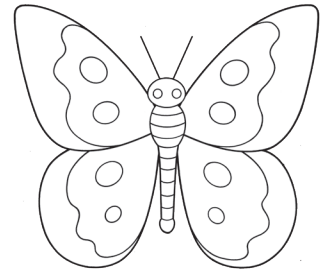
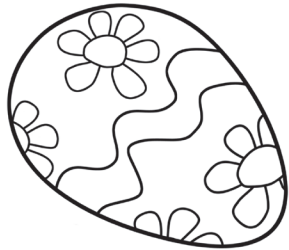
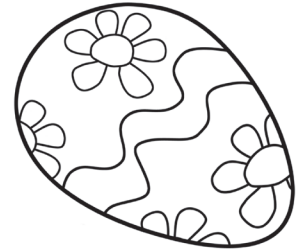
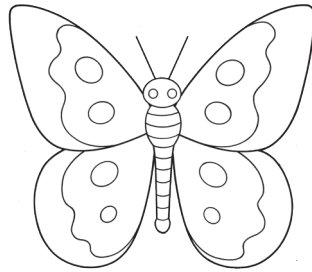


# I Spy Easter Symbols

How many of each Easter symbol do you see below?



# I Spy Easter Symbols

## Teacher Notes



The **BUTTERFLY** is only one of several traditional symbols of the Resurrection.



The most popular symbol is the **EGG**, which seems to be lifeless but then breaks open to release new life.



The **LILY** is another common symbol. A dry and lifeless-looking bulb blossoms into one of the most beautiful flowers on earth.



Appearing in the ancient catacombs of the early Church is another symbol of the Resurrection, the **PEACOCK**. The peacock has a spectacularly beautiful tail, which loses its beauty during the molting season. But when the molting season ends, a new and more beautiful tail appears. The allusion in this symbol is to the fact that through the Resurrection Christ's life became more beautiful than ever.